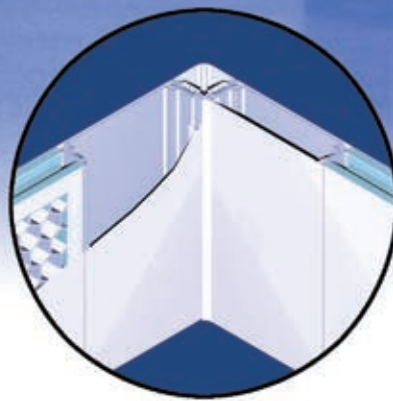


Cleanroom

WALL & CEILING SYSTEMS



Simply Building Better Environments
For **Advanced Technology & Life Sciences**



Modular Construction With Solid Performance

The definition of “clean” changes with every application. At Microzone Corporation “clean” means a commitment to producing not only cost effective and efficient cleanrooms, but cleanrooms which are versatile and flexible in design. We realize all these factors are crucial to your operations. The result ... a particulate and contaminant-free facility that conforms to your changing needs.

We have been manufacturing cleanrooms for many years. Naturally, during this period of time our designs and expertise have evolved but our objectives have remained the same - to provide you, the customer, with a cleanroom tailored to your most exacting requirements.



Microzone Corporation Cleanrooms...

Let our experience and expertise work for you.



At the heart of this philosophy is our dedication to Design and Engineering and our commitment to uncompromising quality.

Our Design and Engineering Group works with unparalleled determination to create cleanroom facilities of various configurations and sizes for a variety of applications, specifications and scientific disciplines.

We spend time listening to you, the customer, because we want to be sure that all the details, in fact everything, is done right. Working within your parameters we will assimilate all the necessary information to produce a cleanroom for your application. The net result of this down-to-earth approach is that whether the construction is “modular” or “stick-built”, each facility is as unique as the operation for which it was created.

The CR3W Series Modular Cleanroom Wall System

The Microzone Series CR3W Modular Cleanroom 2" Wall System is designed to provide a clean and reliable wall system for either new or existing installations. The high quality components allow a high performance cleanroom to be constructed. The net result is a smooth, flush wall finish which can be readily wiped down. Wall panel sections may be easily removed without disturbing either adjacent panels or the ceiling system (non-progressive modular system), thereby minimizing the possibility of contaminating the cleanroom environment at a later date.

Each modular panel consists of an integrally recessed (edge perimeter) anodized aluminum support strut extrusion (with a clear finish) which surrounds the centre honeycomb core on all four sides. A pre-finished (coil coating process) metal sheet (various materials are available including anti-static and nonmetallic finishes) is then bonded onto this matrix. Finally, the finished surface is sealed with a protective film. All components are fabricated from non-outgassing materials. Wall to wall and wall to ceiling connections consist of covered painted aluminum extrusions. All wall openings, junctions and end sections are finished and sealed.



Microzone Corporation's Cleanroom Wall System lets you custom design a cleanroom to fit your needs and your budget.

The edge perimeter wall extrusion can be easily attached to the adjustable height (pedestal) or fixed height floor track, ceiling track, and wall-to-wall attachment extrusions. On-site, the wall and service chase panels are fastened tightly together creating a double sealed joint connection and a secure alignment of panels.

Standard integral service chases are 8" wide and permit the removal and installation of an individual wall panel without disturbing adjacent wall panels. Each modular wall panel has a service chase section alongside. The service chases support the installation of electrical services vertically and accept an electrical box. A removable cover plate provides access to the service chase without disturbing the structural integrity of the system. Small gas lines may also be run inside the service chase.

The wall system utilizes either stand-off wall panels or dedicated integral air return panels (which match the finish of the modular cleanroom panels) to form the low level air return plenums necessary to ensure that the correct return air volume is extracted from the cleanroom.

The net result is a flexible modular cleanroom system that meets or exceeds today's exacting standards and that can be readily adapted for future expansion.



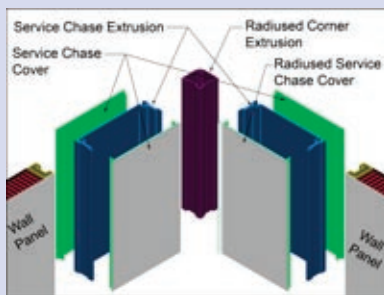
Benefits/Advantages

There are many inherent advantages to the Microzone CR3W Modular Cleanroom Wall System as opposed to traditional stick-built construction. Some benefits are as follows:

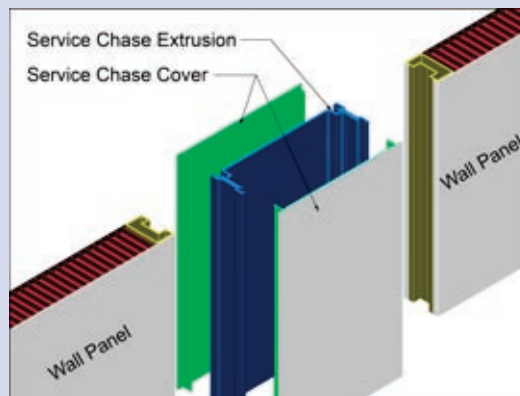
1. Microzone CR3W Wall Systems are designed and manufactured with materials to meet cleanroom classifications from ISO CLASS 4 (CLASS 10) to ISO CLASS 8 (CLASS 100,000)
2. All walls, doors, intersections and ceiling extrusions, glass frames, ceiling and floor attachment hardware are designed to provide a flush finish (GMP compliant)
3. All interior and exterior corners are covered as are wall to floor and wall to ceiling joints
4. The all modular pre-engineered design components are easy to relocate and re-use
5. Clean and quick site assembly with minimal connection hardware
6. Integration of data transmission, electrical or specialty mechanical services into the service chases located between adjacent wall panel sections
7. The flexible design allows for site adjustments or last minute site changes
8. Large installed base of approved systems in the advanced technology and life sciences industries
9. Tax advantages (may be subject to a 7 year depreciation)
10. Fast track validated self-contained facility from a responsible single source supplier

Microzone Corporation's CR3W Wall System is a cost-effective approach to a first-class facility that is readily adaptable to meet future demands.

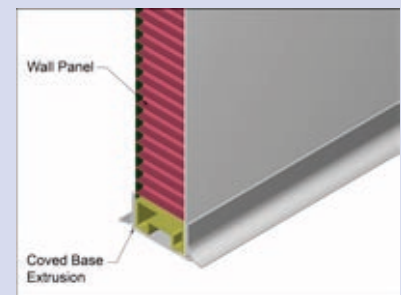
Wall System Details



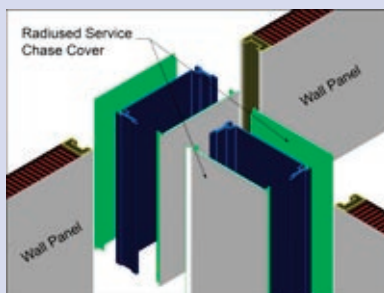
Corner Detail



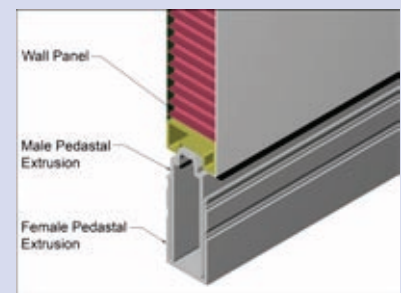
Service Chase



Fixed Covered Base



Intersection Detail



Adjustable Pedestal

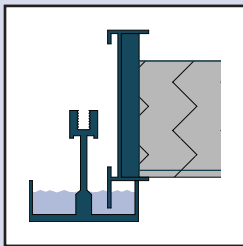
Ceiling Systems

The Microzone Modular Cleanroom Ceiling Systems range from high integrity walkable flat panel ceilings to traditional lay-in gasketed T-bar grid systems. Our 2" aluminum flush ceiling system consists of 2-tiers. The lower section provides a flush finished ceiling comprising of sealed aluminum ceiling panels, special recessed fluorescent lights and room side replaceable HEPA/ULPA modules. The upper section has provision for optional drop in steel panels so that the area above the cleanroom is completely accessible. This ceiling is designed with heavy duty suspension hardware which is attached to the building structure. If required, the lighting can be serviced from above the cleanroom without disturbing the integrity of the cleanroom. We also offer a 2" aluminum gel seal ceiling system and traditional 1 1/2" or 2" aluminum T-bar gasketed ceiling grid systems. Recessed fluorescent lights and lay-in ceiling panels are available to suit the cleanliness level requirements. All our ceiling systems will accept either standard ducted HEPA/ULPA filter modules or standard fan powered HEPA/ULPA filter modules.

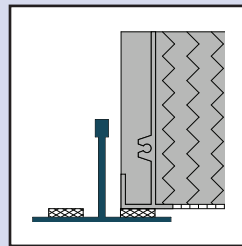


Microzone Corporation has the cleanroom ceiling system to suit your specialized requirements.

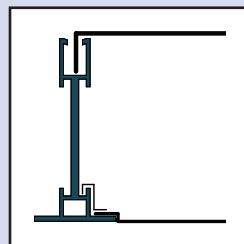
Ceiling Options



2" Aluminum Gel Seal Ceiling System



1.5" or 2" Aluminum Gasketed Ceiling System

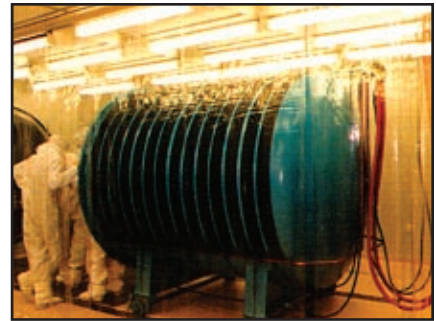


2-Tier Walkable 2" Aluminum Flush Ceiling Sys-

Project Profile

PHOTORECEPTOR MANUFACTURING FACILITY SOFIA, BULGARIA

The facility was designed for the manufacturing and reconditioning of photoreceptor devices. Microzone Corporation supplied and installed a turn-key 2,000 sq. ft. all modular combination multi CLASS Cleanroom. This facility features the Microzone clean interlock wall system complete with integral air shower pass-thrus for product transfers. Our LS-CPU monitoring failsafe control system ensures safe operation at all levels of production.



MICROFABRICATION/PHOTONICS DEVELOPMENT FACILITY ONTARIO, CANADA

This major teaching institute required a 3000 sq. ft. multi CLASS facility for micro fabrication and photonics development. The facility was designed utilizing Microzone's interlocking advanced technology wall systems and perforated raised pedestal flooring. The facility also features a combination of specialty facility water and gas systems and electrical services, with an all sealed ceiling plenum air distribution fan/filter system.



NANOTECHNOLOGY RESEARCH FACILITY TENNESSEE, USA

This major research center required a 2,000 sq. ft. multi CLASS facility for nanotechnology. This facility features Microzone interlocking advanced technology wall systems, with an all sealed plenum air distribution system. The stand alone prepackaged HVAC mechanical systems, special ductwork and control systems provided environmental control to all facility zones.



LEVEL 3 CONTAINMENT FACILITY OREGON, USA

This major research institute required a 1,500 sq. ft., two zone, Level 3 Containment Facility. This facility features our LS-CPU monitoring failsafe control system, aseptic interlocking walls and "Ceiltite" walkable ceilings with integral wall/ceiling clean cove feature. The facility also utilizes in room replacement filter modules.



No matter where your location throughout the world, **Microzone Corporation** can supply you with a validated state-of-the-art facility on a timely fast track schedule - all from a responsible single source.



86 Harry Douglas Drive
Ottawa, Ontario, Canada K2S 2C7
Tel: (613) 831-8318
Toll Free: (877) 252-7710
Fax: (613) 831-8321
E-mail: sales@microzone.com
www.microzone.com

Local Representative: