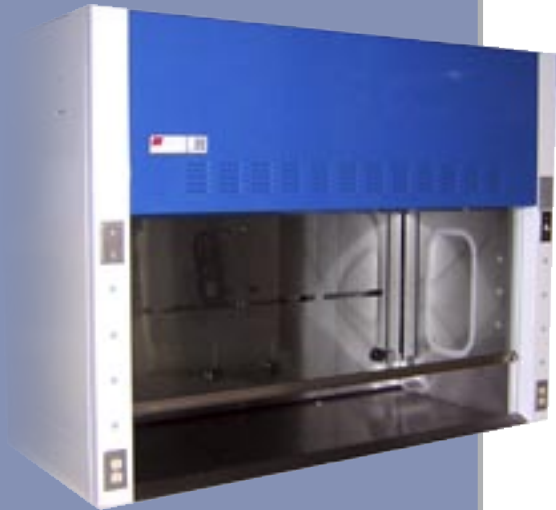




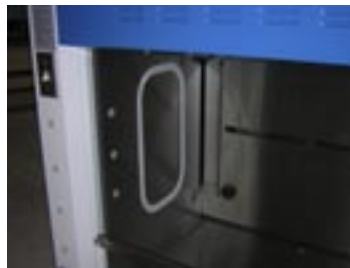
WWW.MICROZONE.COM

Microzone Corporation MFH Series Fume Hoods



Features:

- Exterior metal shell construction with powder coated two tone paint finish
- By-pass or air injection airflow design
- Aerodynamically designed side air intake airfoils
- Integral ergonomic front air intake foil
- Stainless steel round duct connection collar
- Recessed vertical sliding sash with built in pocket containment shield
- Single point center counterweight pulley system
- Adjustable interior baffle system
- Large work volume with choice of FRP, polymer or stainless steel liner options
- Epoxy resin dished integral work surface
- All major service operations can be performed from the front of the cabinet
- Factory wired electrical components
- Pre-punched service connection points
- Two electrical outlets pre-wired and mounted on front airfoils
- Integral all sealed fluorescent light assembly and factory wired light switch
- Range of optional service accessories and base cabinetry
- All hoods are built to meet ASHRAE 110-95
- CSA electrical approved



Factory Plumbed Services



Stainless Steel Duct Collar



Single Point Counterbalance

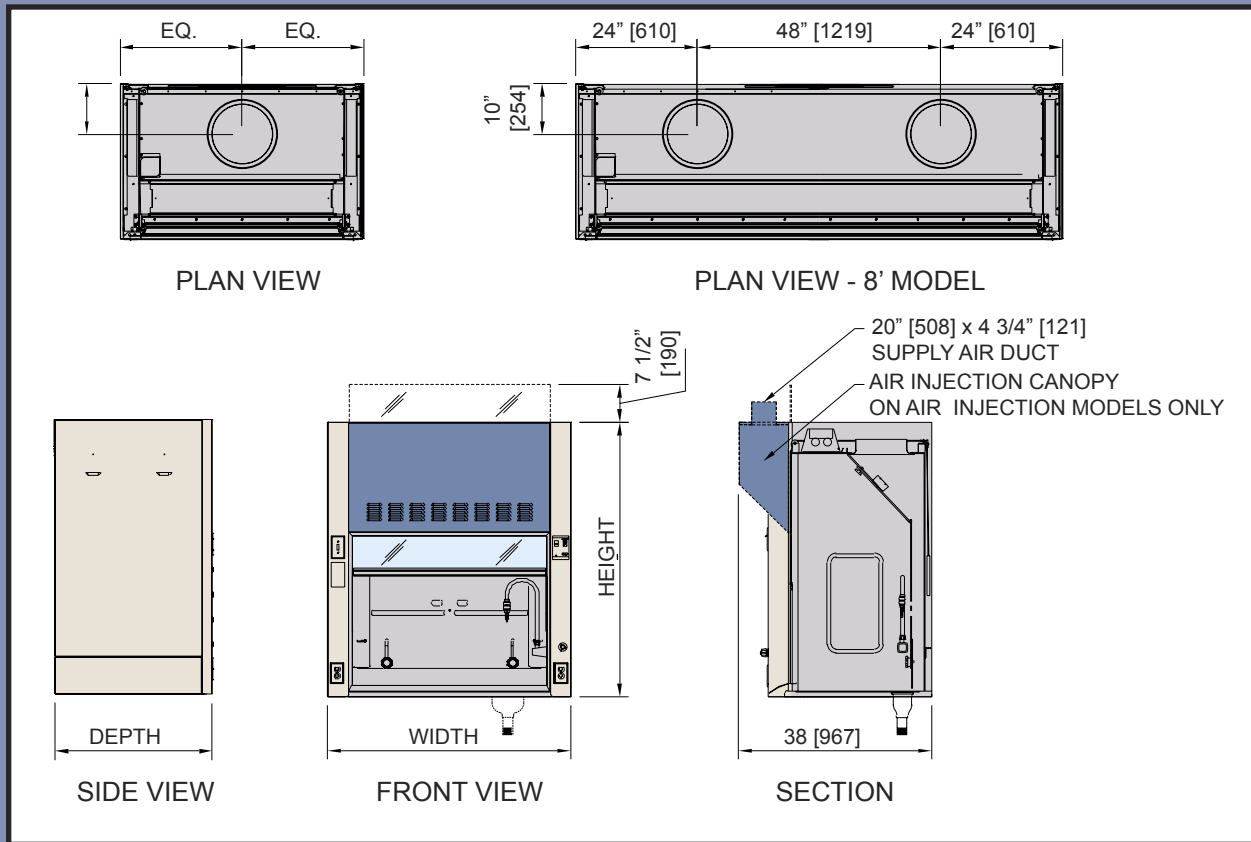


Aerodynamic Front Airfoils



Balanced Air Intake Panel

Technical Specifications

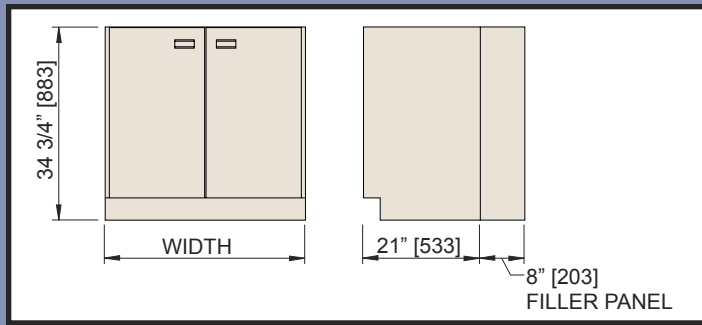


Balanced Air Type							
Model #	Width	Depth	Height	Front Opening	Exterior Duct Size	Air Flow @100 ft/min	Static Pressure Loss
MFH-48-BA	48" 1219mm	31" 788mm	55" 1397mm	8.1 ft ² 0.75 m ²	10" 254mm	810 CFM 382 l/s	.38 in/H ₂ O 94 Pa
MFH-60-BA	60" 1524mm	31" 788mm	55" 1397mm	10.7 ft ² 0.99 m ²	12" 305mm	1070 CFM 505 l/s	.38 in/H ₂ O 94 Pa
MFH-72-BA	72" 1829mm	31" 788mm	55" 1397mm	13.1 ft ² 1.21 m ²	12" 305mm	1310 CFM 618 l/s	.48 in/H ₂ O 119 Pa
MFH-96-BA	96" 2438mm	31" 788mm	55" 1397mm	18.2 ft ² 1.69 m ²	2 x 10" 2 x 254mm	1820 CFM 859 l/s	.31 in/H ₂ O 77 Pa
Air Injection Type							
MFH-48-AI	48" 1219mm	31" 788mm	55" 1397mm	8.1 ft ² 0.75 m ²	10" 254mm	810 CFM 382 l/s	.38 in/H ₂ O 94 Pa
MFH-60-AI	60" 1524mm	31" 788mm	55" 1397mm	10.7 ft ² 0.99 m ²	12" 305mm	1070 CFM 505 l/s	.38 in/H ₂ O 94 Pa
MFH-72-AI	72" 1829mm	31" 788mm	55" 1397mm	13.1 ft ² 1.21 m ²	12" 305mm	1310 CFM 618 l/s	.48 in/H ₂ O 119 Pa
MFH-96-AI	96" 2438mm	31" 788mm	55" 1397mm	18.2 ft ² 1.69 m ²	2 x 10" 2 x 254mm	1820 CFM 859 l/s	.31 in/H ₂ O 77 Pa



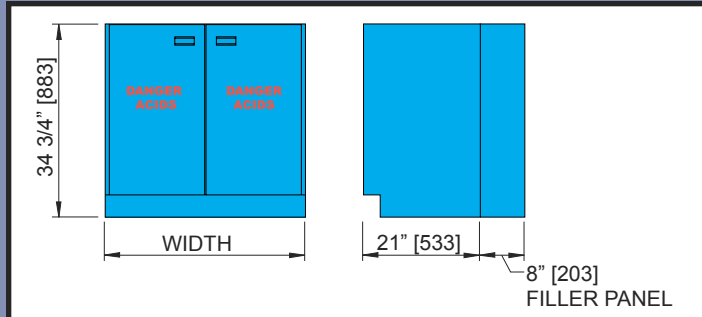
86 Harry Douglas Drive, Ottawa, Ontario, Canada
 Phone: 613-831-8311, Toll Free: 877-252-7710
 Fax: 613-831-8321, Email: sales@microzone.com

Standard Base Cabinets



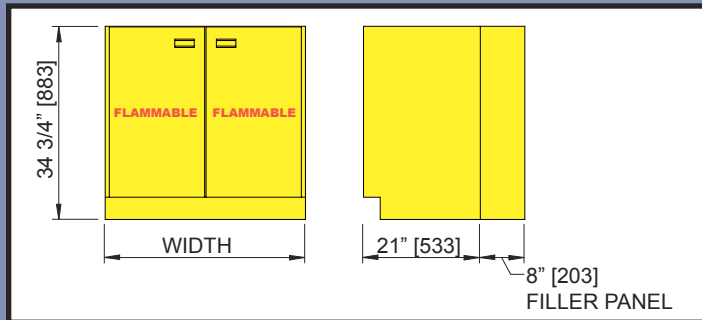
Model #	Width
MBC-24	24" [610]
MBC-36	36" [914]
MBC-48	48" [1219]

Acid Storage Cabinets



Model #	Width
ASC-24	24" [610]
ASC-36	36" [914]
ASC-48	48" [1219]

Solvent Storage Cabinets



Model #	Width
SSC-24	24" [610]
SSC-36	36" [914]
SSC-48	48" [1219]

* Note: For other sizes use combinations of the above listed base cabinets

Optional Accessories

Part #	Description
14-000	Durcon oval cupsink 3" x 6" x 3"
14-100	Stainless steel 8" diameter cupsink
14-1100	Motor starting switch installed on front mullion of hood
14-560	Sidewall mount localized operated gas, air or vacuum turret
14-600	Sidewall mount remote operated gas, air or vacuum turret
14-700	Sidewall mount localized operated cold water gooseneck faucet
14-800	Sidewall mount localized operated hot/cold water gooseneck faucet
14-900	Sidewall mount remote operated cold water gooseneck faucet
14-1000	Sidewall mount remote operated hot/cold water gooseneck faucet
ALN-200	Airflow indicator alarm system



86 Harry Douglas Drive, Ottawa, Ontario, Canada
 Phone: 613-831-831, Toll Free: 877-252-7710
 Fax: 613-831-8321, Email: sales@microzone.com