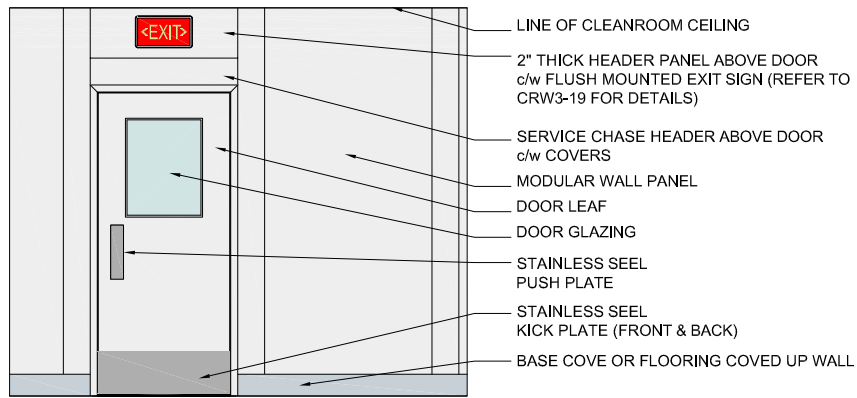
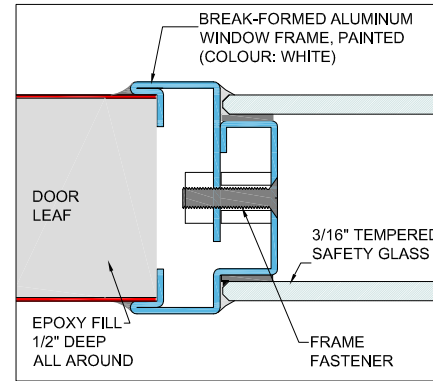


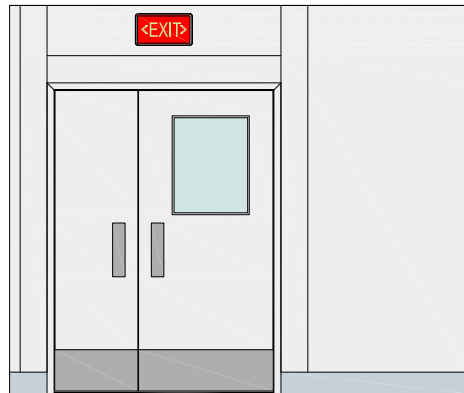
TYPICAL DOOR / FRAME PARTIAL SECTION



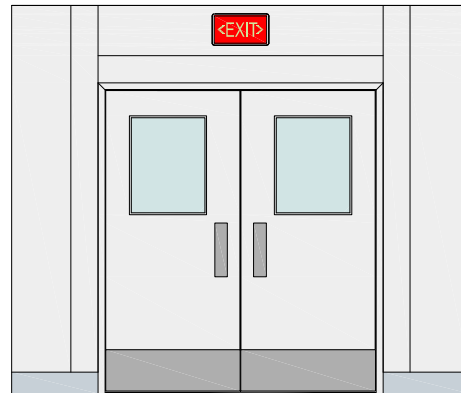
STANDARD 36" WIDE X 84" HIGH DOOR



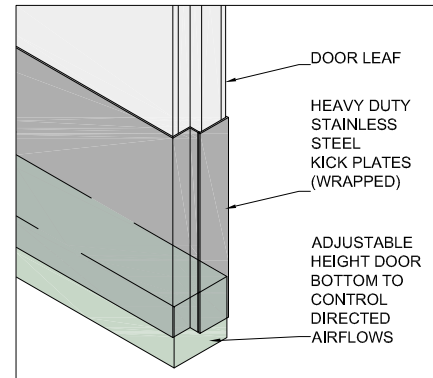
PARTIAL SECTION THROUGH FACTORY INSTALLED DOOR GLAZING



24" WIDE + 36" WIDE DOORS, 84" HIGH



36" WIDE + 36" WIDE DOORS, 84" HIGH



DETAIL OF ADJUSTABLE HEIGHT DOOR BOTTOM

**NOTES:**

1. DOOR LEAF CONSTRUCTED OF 0.040" THICK PRE-FINISHED ALUMINUM BONDED TO 3/8" ALUMINUM HONEYCOMB CORE. THE EDGES OF THE FACING MATERIAL ARE FOLDED OVER THE SIDES OF A HEAVY-DUTY EXTRUDED ALUMINUM DOOR LEAF FRAME. DOOR LEAF IS FACTORY ASSEMBLED WITH DOOR FRAME, HEAVY DUTY STAINLESS STEEL CONTINUOUS HINGE, GLAZING AND FRAME, STAINLESS STEEL KICK PLATES (BOTH SIDES OF DOOR) AND A SOLID POLYPROPYLENE ADJUSTABLE DOOR BOTTOM.
2. DOOR LEAF FINISH AND FRAME TO MATCH MODULAR WALL PANELS.
3. ALL GLAZING IS TEMPERED SAFETY GLASS (TINTED AS REQUIRED)
4. DOORS COME WITH STANDARD HARDWARE:
  - A. SURFACE MOUNT MECHANICAL CLOSER
  - B. STAINLESS STEEL PUSH/PULL HARDWARE
  - C. INTERLOCK HARDWARE
5. OPTIONAL HARDWARE:
  - A. PASSAGE SETS
  - B. KEYED / CODED ACCESS
  - C. POWER DOOR OPENER(S)
6. ALL JOINTS ON GLAZING FRAME ARE SEALED AT FACTORY. ALL OTHER JOINTS SEALED WITH SPECIAL CAULKING AFTER INSTALLATION.

REV	DESCRIPTION	DATE	DRAWN
7	GENERAL REVIEW	SEPT 05	M.L.
6	GENERAL REVIEW	08 AUG 05	P.F.
5	GENERAL REVIEW	JULY 2005	M.L.
4	NEW WALL PANEL DETAILS & LAYOUT	20 NOV 03	ML
3	NEW WALL PANEL DETAILS & LAYOUT	20 NOV 03	M.L.
2	COLOUR PLOT MODIFIED	17 FEB 03	DLMM
1	ORIGINAL ISSUE	06 FEB 03	DLMM

REV	DESCRIPTION	DATE	DRAWN
REVISIONS			



INTRODUCTION TO MODULAR CLEANROOMS AND CONTAINMENT FACILITY SYSTEMS

Factory 199:  
**FACTORY ASSEMBLED DOOR SYSTEM DETAILS**

Drawn By	PF & ML	Checked By	PF	Scale	AS NOTED	Date	20 NOV 03
Issue	---	Job Number	---	Drawing Number	---		CRW3-16

UNLESS OTHERWISE NOTED, THIS DRAWING REMAINS THE PROPERTY OF MICROZONE CORPORATION. IT SHALL NOT BE REPRODUCED OR USED FOR MANUFACTURE, SECTION OR CONSTRUCTION WITHOUT THE EXPRESSED WRITTEN AUTHORIZATION BY THE OWNER. THE RECIPIENT, BY ACCEPTING THIS DRAWING, ASSUMES THE GREATEST RESPONSIBILITY AND WAIVES THEIR RIGHTS AGAINST NOT TO ALLOW ITS USE BY UNAUTHORIZED PERSONS, WITHOUT INCURRING LIABILITY FOR PENALTIES IMPOSED BY LAW.