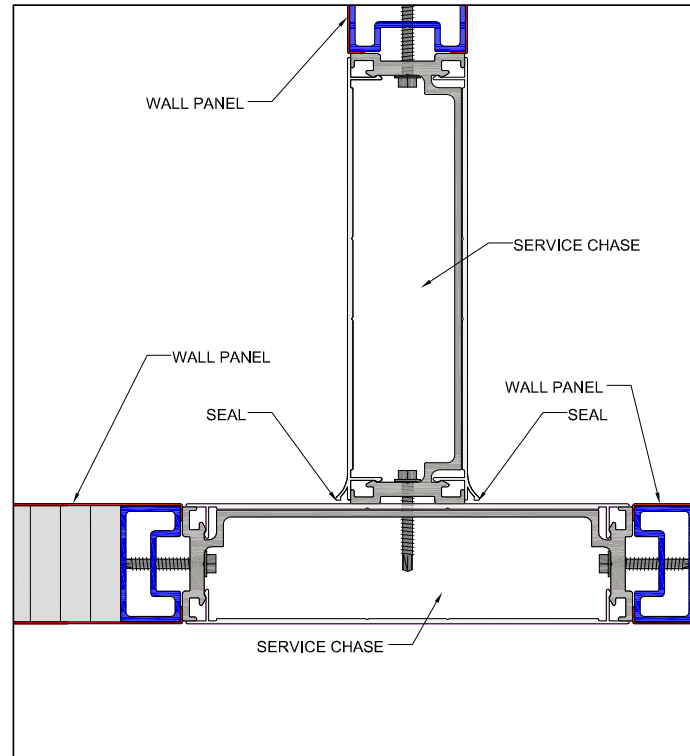
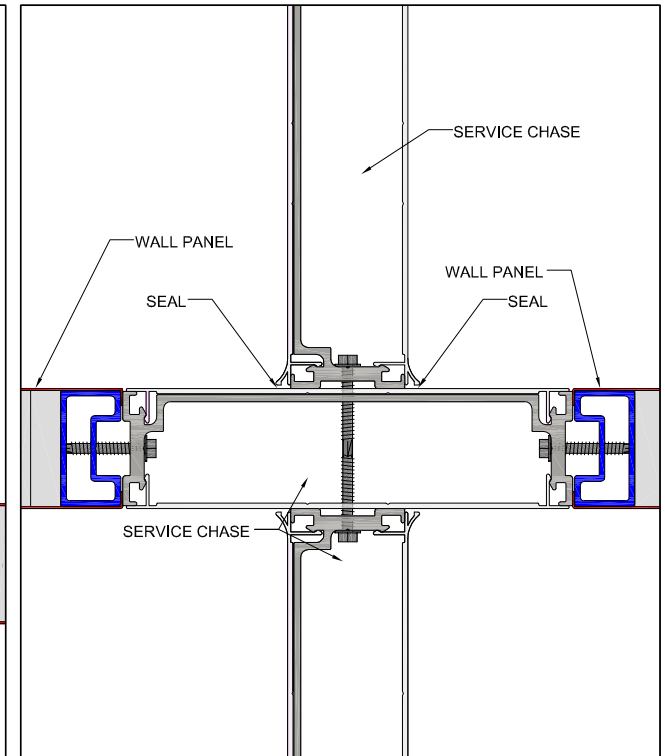


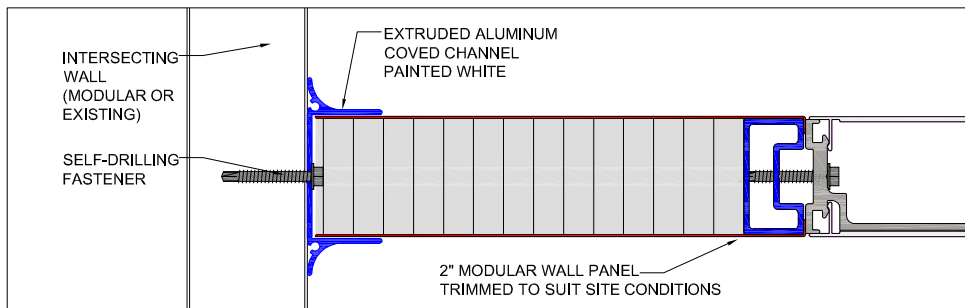
2-WAY CORNER DETAIL



3-WAY INTERSECTION DETAIL



4-WAY INTERSECTION DETAIL




ADJUSTABLE INTERSECTION DETAIL

NOTE:

1. ALIGNMENT BLOCKS (AS REQUIRED) LOCK MODULAR WALL PANELS TO SERVICE CHASES. REFER TO CRW3-1 FOR DETAILS
2. ALL JOINTS SEALED WITH SPECIAL CAULKING AFTER INSTALLATION
3. INTERNAL AND EXTERNAL RADII = 1/2"

6	GENERAL REVIEW	SEPT 05	M.L.
5	GENERAL REVIEW	8 AUG 05	P.F.
4	GENERAL REVIEW	JULY 2005	M.L.
3	NEW WALL PANEL DETAILS & LAYOUT	20 NOV 03	M.L.
2	COLOUR PLOT MODIFIED	17 FEB 03	DL/MM
1	ORIGINAL ISSUE	06 FEB 03	DL/MM
REV	DESCRIPTION	DATE	DRAWN

REVISIONS



MICROZONE CORPORATION
 88 HARRY DOUGLAS DRIVE, OTTAWA, ONTARIO, CANADA K2S 2C7
 TEL: (613) 831-8318 www.microzone.com FAX: (613) 831-8321

INTRODUCTION TO MODULAR CLEANROOMS AND CONTAINMENT FACILITY SYSTEMS

Drawing Title: **PANEL INTERSECTION DETAILS**

Drawn By: PF & ML	Checked By: PF	Scale: AS NOTED	Date: 20 NOV. 03
Issue: -----	Job Number: -----	Drawn's Number: -----	Project Number: CRW3-8
Client: -----	6		

UNLESS OTHERWISE NOTED, THIS DRAWING REMAINS THE PROPERTY OF MICROZONE CORPORATION. IT SHALL NOT BE REPRODUCED OR USED FOR MANUFACTURE, DESIGN OR CONSTRUCTION WITHOUT THE EXPRESS WRITTEN APPROVAL BY THE OWNER. THE ACCEPTOR, BY ACCEPTING THIS DRAWING, ASSUMES THE CUSTODY THEREOF AND UNDER THE ABOVE TERMS AGREES NOT TO ALLOW ITS USE BY UNAUTHORIZED PERSONS WITHOUT INCURRING LIABILITY FOR FINALTERMS APPROVED BY LAW.

E-FILE: CRW3-08.dwg